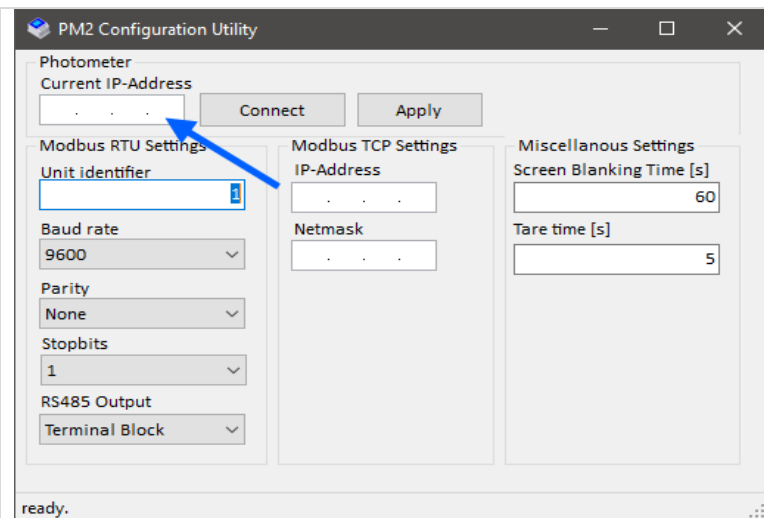


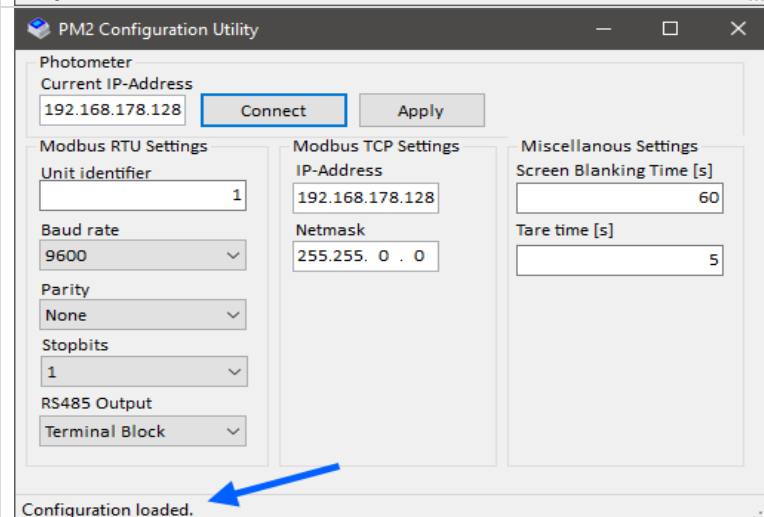
PM2 Configuration Utility

1. Connecting the configuration software to the PM2

- a. Make sure the PM2 and your Windows® PC are connected to the same physical Ethernet. Either peer to peer (direct cable connection between PC and PM2) or via Ethernet Switch.
- b. For connecting you will need to know the current IP-Address of the PM2. At any time, it can be found on the screen of the PM2.
- c. The IP-Address plus Netmask of the PM2 and the IP-Address plus Netmask of the Network Card of your PC must share a matching configuration to communicate with each other.
- d. Enter the PM2s IP-Address into the textbox “Current IP-Address” and press the “Connect” button.

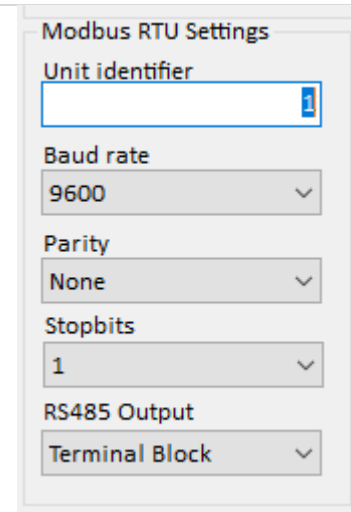


- e. After successful connection the configuration values should appear and the status bar should state: “Configuration loaded.”



2. Modbus RTU Settings

- a. Unit Identifier
Each slave connected to the Modbus needs a unique Unit Identifier to be addressed by the master.
- b. RS485 Settings
Set the baud rate, parity and the number of stopbits according to the configuration of your Modbus master.
- c. RS485 Output
The PM2 offers two RS485 ports to connect to the Modbus:
One is located on the Terminal Block and one on the M12 connector.
Only one connector can be used at the same time.
Select the wanted output from the drop-down menu.

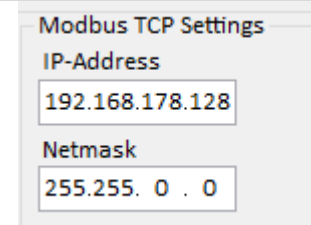


The screenshot shows a configuration window titled "Modbus RTU Settings". It contains the following fields and dropdown menus:

- Unit identifier:** A text input field containing the value "1".
- Baud rate:** A dropdown menu currently set to "9600".
- Parity:** A dropdown menu currently set to "None".
- Stopbits:** A dropdown menu currently set to "1".
- RS485 Output:** A dropdown menu currently set to "Terminal Block".

3. Modbus TCP Settings

- a. IP-Address and Netmask
The IP-Address and the Netmask of the PM2 must match to your local IP-Range to be available to master.
- b. PM2 IP-Address
The configured IP-Address is also the global IP-Address used for connecting the configuration utility.
Attention: By changing the IP you will need to reconnect the configuration utility to the new IP-Address.

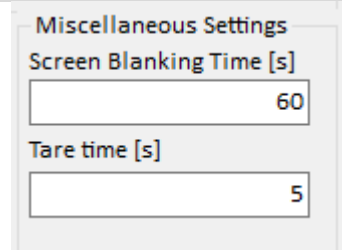


The screenshot shows a configuration window titled "Modbus TCP Settings". It contains the following fields:

- IP-Address:** A text input field containing the value "192.168.178.128".
- Netmask:** A text input field containing the value "255.255. 0 . 0".

4. Miscellaneous Settings

- a. Screen Blanking Time
For power saving purposes the PM2 reduces the brightness of the screen after a certain time span. Enter the wanted number of seconds for the screen blanking.
- b. Tare time
For not accidentally triggering a tare, the tare button as well as the tare input needs to be hold in tare position for a certain amount of time. Enter the wanted tare time in seconds.



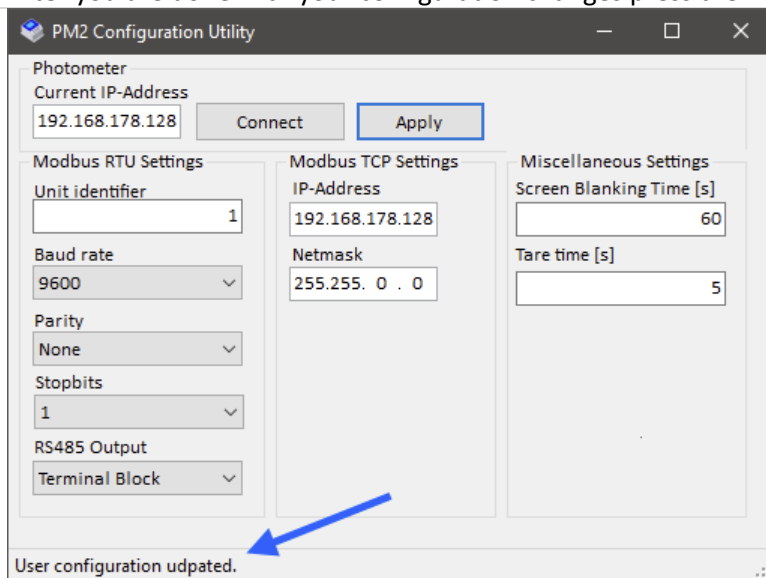
Miscellaneous Settings

Screen Blanking Time [s]
60

Tare time [s]
5

5. Saving the settings

- a. After you are done with your configuration changes press the “Apply” Button.



PM2 Configuration Utility

Photometer
Current IP-Address
192.168.178.128

Modbus RTU Settings
Unit identifier: 1
Baud rate: 9600
Parity: None
Stopbits: 1
RS485 Output: Terminal Block

Modbus TCP Settings
IP-Address: 192.168.178.128
Netmask: 255.255.0.0

Miscellaneous Settings
Screen Blanking Time [s]: 60
Tare time [s]: 5

User configuration updated.